



Wild Ennerdale Partnership Memorandum of Agreement

Signatures

This Agreement is made between:

Forestry England of 620 Bristol Business Park, Coldharbour Lane, Bristol, BS16 1EJ ('**Forestry England**')

Name (print): _____

Position: _____

Signature: _____ Date: _____

The National Trust for Places of Historic Interest or Natural Beauty

(registered charity number 205846) of Heelis, Kemble Drive, Swindon, SN2 2NA ('**National Trust**')

Name (print): _____

Position: _____

Signature: _____ Date: _____

Natural England of 4th Floor, Foss House, Kings Pool, 1-2 Peasholme Green, York, YO1 7PX ('**Natural England**')

Name (print): _____

Position: _____

Signature: _____ Date: _____

United Utilities Water PLC of Haweswater House, Lingley Mere Business Park,
Lingley Green Avenue, Warrington WA5 3LP (**'United Utilities'**)

Name (print): _____

Position: _____

Signature: _____ Date: _____

The above are referred to in this Agreement collectively as **'the partnership'** or individually as a **'partner'**. Local partner contacts are shown in Appendix 1.

Legal Status

This Memorandum of Agreement (MoA) sets out a framework between Forestry England, National Trust, Natural England* and United Utilities. These four organisations constitute the 'Wild Ennerdale Partnership' and comprise the main landowners in Ennerdale.

This MoA does not create any legal obligations or a contract between the Partners, but provides the basis for all aspects of management and communications. The term 'Partner' is not used in a legal sense and any matters which are not permitted by applicable law or the constitution of each Partner, whether now or in the future, shall be removed from this document.

This MoA does not imply any transfer of intellectual property rights of copyright from or to any of the Partners. Any such transfer would require a separate agreement between the partners.

This MoA should undergo a periodic review every 3 years (from signatory date) to assess objectives in ensuing support for the vision and to make any necessary amendments, subject to approval from all Partners.

*Natural England (non-landowner) provides advisory support for designated and non-designated land & water.

Wild Ennerdale Vision (established 2003)

“To allow the evolution of Ennerdale as a wild valley for the benefit of people, relying more on natural processes to shape its landscape and ecology”

Guiding Principles

- Protect and enhance the sense of wildness
- Give freedom for natural processes to enable more robust, resilient and better functioning ecosystems to develop at a landscape scale
- Only intervene where complementary to the vision or where a threat to the vision is posed
- Operate as a partnership in all aspects of decision making, implementation and research, providing mutual support across partners
- Celebrate and apply the learning experiences that all partners gain from their involvement in the process
- Promote Wild Ennerdale and its constituent partners' involvement within it
- Focus practical management, monitoring and decision making at a landscape scale using the Stewardship Plan as the main tool for guidance
- Strive to put people at the heart of the environment through public enjoyment, engagement and connection with nature
- Support business opportunities that are appropriate and fitting with our branding and vision
- Promote the management of partners assets within the valley to reflect the vision
- Promote nature recovery of habitats to better sustain healthy wildlife, functioning ecosystems and a more resilient 'future natural' landscape fit for purpose in the face of climate and biodiversity challenges, thus supporting the Lawton principles of 'more, bigger, better and joined up'

- Consider, respect and continue to monitor the historical and cultural assets of the valley
- Promote the natural capital approach to further understand the broader value of the Wild Ennerdale approach
- Share information and promote case studies to demonstrate and inspire others, prompting engagement and advocacy across a wider sphere of influence



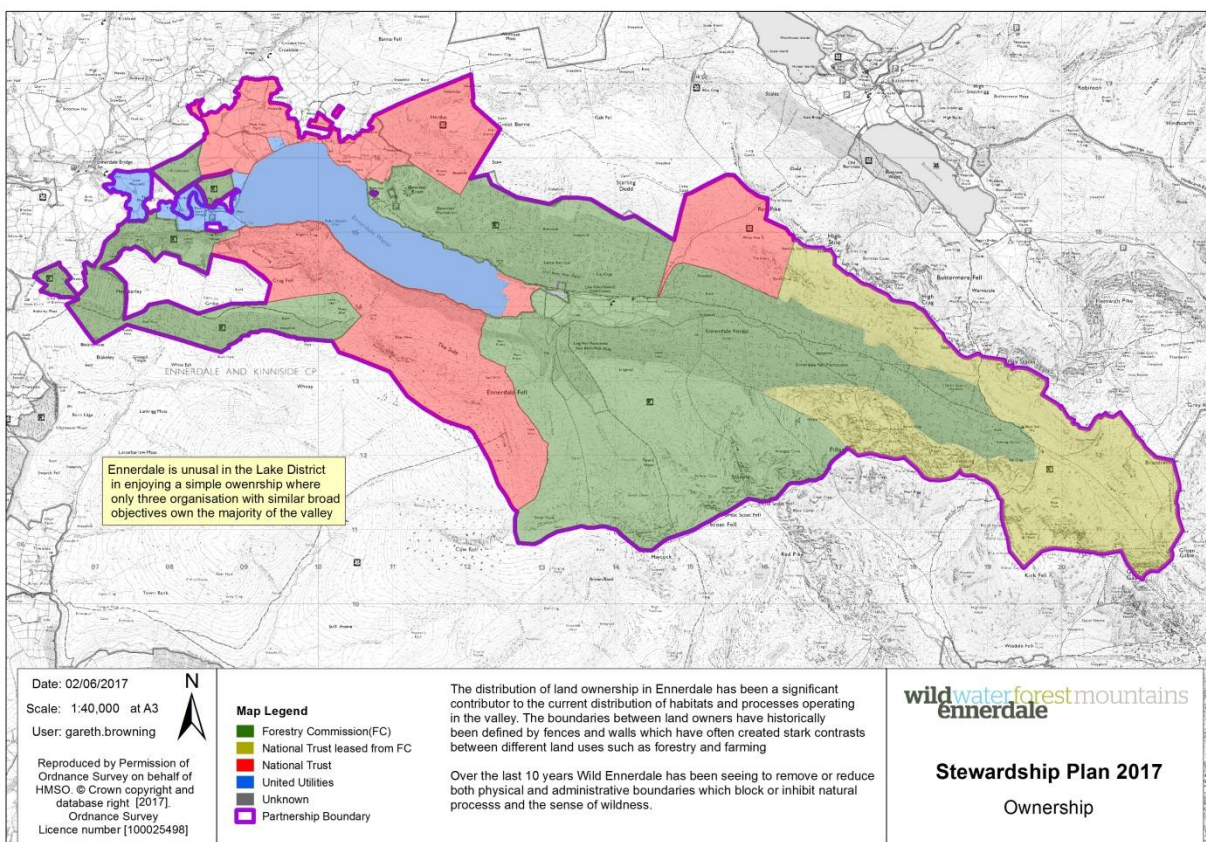
Middle valley & River Liza ©Scotland Big Picture

Partner Responsibilities

Each Partner enters into this Agreement for the purpose of managing the partnership landholding to support the vision and guiding principles. In addition, each partner commits to:

- Attend partnership meetings
- Take responsibility for environmental compliance and health and safety on their own land and share that information with other partners
- Share details of activities and events including health and safety information to facilitate partnership working
- Support, supervise and administer the Wild Ennerdale volunteer group
- Ensure any media communication material is approved by all partners
- Provide an annual financial contribution to the partnership budget & oversee annual budget management
- Jointly guide the role and activities of the Partnership Officer
- Support continued presence of Wild Ennerdale on the web and social media

Partner Landholding



Partner Objectives

Forestry England

- Maintain continued FSC and PEFC certification
- Deliver the Wild Ennerdale Stewardship Plan
- Continue practical support for and promote the benefits of volunteering
- Through Wild Ennerdale deliver the Forestry England objectives; superb forests, increasing natural capital, telling our story, high quality investments and sustainable finance and being an outstanding organisation

National Trust

- Employ the Partnership Officer
- Host and manage the Partnership budget including external fundraising & donor opportunities
- Offer access to NT consultant time across the Partnership area
- Deliver the objectives of the Land, Outdoors and Nature strategy
- Lead on the delivery of the Sustainable Land Management programme, Property Delivery Plans and the Estate Management Plan.

Natural England

- Demonstrate and promote nature recovery at a landscape scale
- Test innovative and alternative land management practices to provide working and costed examples
- Deliver a suite of public benefits/ecosystem services and provide information on their scale, impact and value
- Deliver the SSSI and priority habitat objectives across the valley
- Advise on appropriate agri-environment schemes where they deliver scheme objectives and value for money

United Utilities

- Continue to have access and involvement in decision making on non-owned catchment land to deliver high quality drinking water
- Continue involvement in a wide range of innovative research into catchment management
- Support other United Utilities projects and steer the opportunities generated to benefit the vision for Wild Ennerdale
- Take lessons learnt from Wild Ennerdale and apply elsewhere within United Utilities catchments

Partner Contact Details



Forestry England

Gareth Browning
Area Forester North & West Cumbria
North England Forest District
Peil Wyke
Bassenthwaite Lake
Cockermouth, Cumbria
CA13 9YG
0300 067 4197
gareth.browning@forestry.gsi.gov.uk



Jane Saxon, General Manager
North & West Lakes
Bowe Barn
Borrowdale
Keswick, Cumbria
CA12 5UP
017687 74649
jane.saxon@nationaltrust.org.uk



Simon Webb
Lead Conservation Advisor
Lake District Team
Murley Moss
Oxenholme Road, Kendal
Cumbria
LA9 7RL
07818 095768
Simon.webb@naturalengland.org.uk



Water for the North West
John Gorst
Catchment Partnership Officer
Water Asset Performance
Thirlmere
Cumbria CA12 4TW
01768 772334 x25
john.gorst@uuplc.co.uk

Partnership Officer

Rachel Oakley
Bowe Barn, Borrowdale, Keswick, Cumbria
CA12 5UP
Tel: 0783 637 4808
Rachel.oakley@nationaltrust.org.uk